

# GRIPPERS WITH 2 PARALLEL LONG-STROKE JAWS – SERIES P4

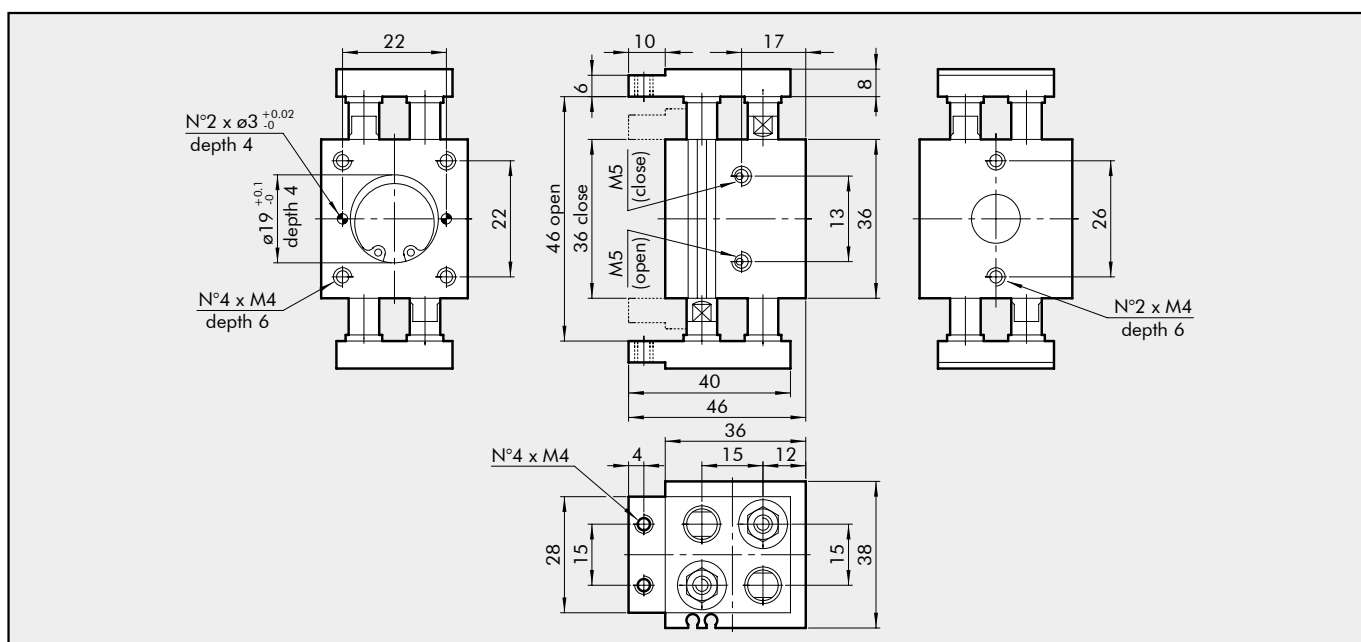
1

These are grippers with 2 parallel long-stroke jaws. The mechanical design makes them suitable for clamping bulky parts. All grippers, except for the smallest ones, can mount a retracting magnetic proximity sensor.



TECHNICAL FEATURES		P4 - 10	P4 - 12	P4 - 16	P4 - 25	P4 - 30
Min./max. operating pressure	bar			3 - 7		
Temperature range	°C			5 - 60		
Maximum operating frequency	cycles/s			1		
Fluid		Lubricated or unlubricated filtered air; if used, it must be continuous				
Size		10	12	16	30	30
Bore	mm	2x10	2x12	2x16	2x30	2x30
Single jaw stroke	mm	5	10	15	30	60
Closing force at 6 bar	N	28	41	75	260	260
Opening force at 6 bar	N	28	41	75	260	260
Weight	kg	0.18	0.3	0.5	2.95	3.7

## DIMENSIONS OF GRIPPER SERIES P4-10

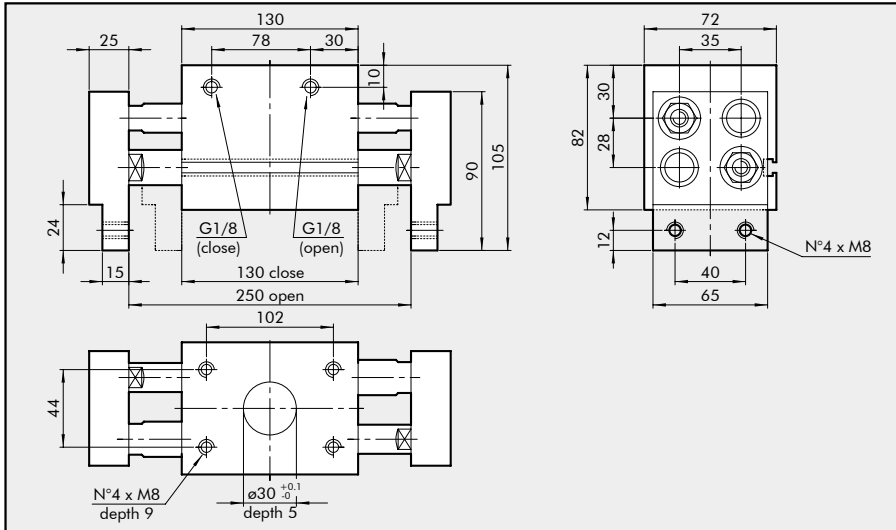


## ORDERING CODES

Code	Description
W1580100200	GRIPPER WITH 2 LONG-STROKE JAWS P4-10



**DIMENSIONS OF GRIPPER SERIES P4 – 30**

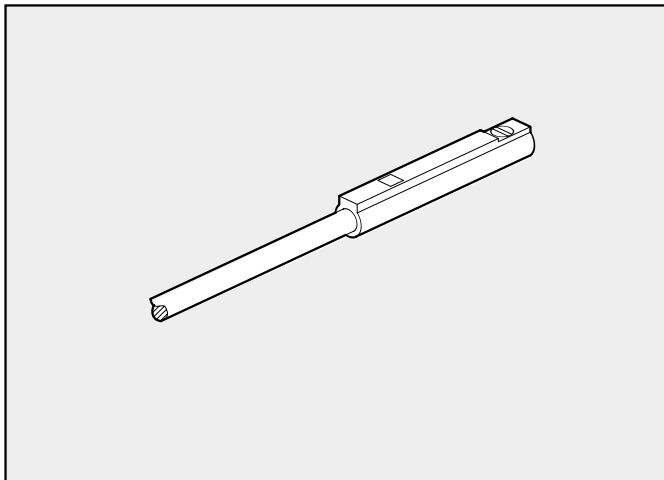


**ORDERING CODES**

Code	Description
W1580300200	GRIPPER WITH 2 LONG-STROKE JAWS P4-30

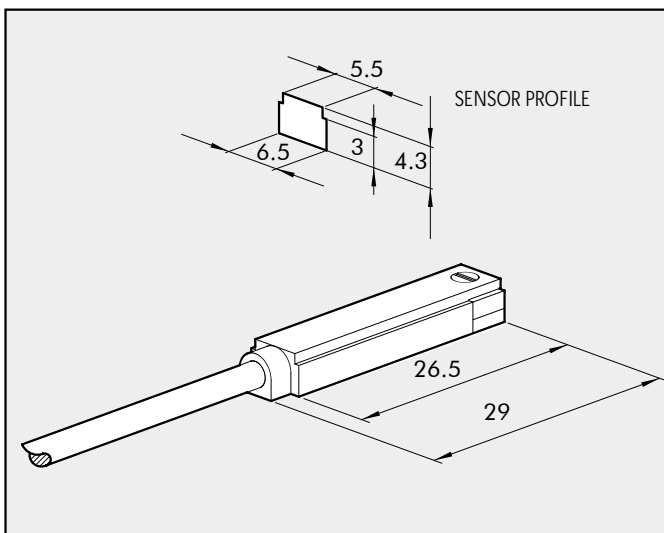
**ACCESSORIES**

**SENSOR FOR P4-12**



Code	Description
W0950044180	Magnetic REED sensor Ø 4 2 wires 24VDC 2 m

**RETRACTING SENSOR FOR P4-16 ÷ 30**



Code	Description
W0950025390	Hall sensor DSL, 3 wires, NO 2.5 m
W0950029394	Hall sensor DSL, 3 wires, NO 300 mm M8
W0950022180	Hall sensor DSL, 2 wires, NO 2.5 m
W0950028184	Hall sensor DSL, 2 wires, NO 300 mm M8