

GRIPPERS WITH TWO PARALLEL JAWS



- Serie P1

This is a gripper with an excellent quality-to-price ratio. Double action with internal or external clamping. Comes with or without a magnet. Inside there is an elliptical cylinder exploiting the maximum dimensions of the gripper. The seals are housed in the body and slide along the tempered steel piston rod without suffering wear. The materials used and the heat and chemical treatments applied means that the parts subject to stress are extra-resistant. See the general catalogue, pages 1/65 – 1/67, for figures and drawings.



- Serie P2

This is a gripper with rollers recirculation jaw guides. Starting from very small sizes – minimum thickness 10 mm. Larger sizes have a system for taking up jaw guide play. Double action with internal or external clamping. Comes with magnet and sensor slot, except for size 06.



- Serie P3

High-precision sturdy gripper guaranteed for 1,500,000 cycles with max load without maintenance.

Top quality materials, accurately worked: body made of highly-resistant hardened aluminium alloy body. Moving parts made of hardened and tempered steel. Double action with internal or external clamping.

Magnets for position sensors, except for size 50 that can take induction magnets.

Special versions available on request:

- With induction sensors
- 5-position monitoring using a positionable sensor.
- With spring lock device for when there is no pressure.
- Double clamping force and half stroke.



- Serie P4

Gripper with a long stroke.

The shape of the jaws makes them particularly suitable for clamping parts of large size with respect to the weight.

Double action with internal or external clamping.

Magnets for position sensors, except for size 10.



• **Serie P5**

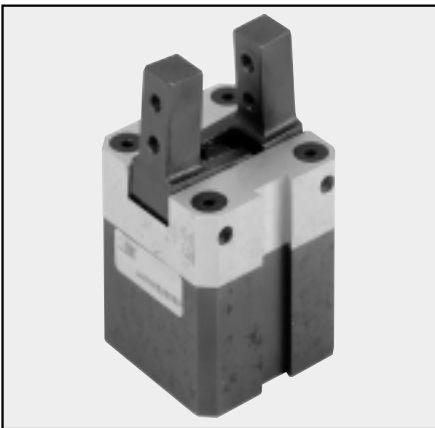
This is a new gripper that can be integrated with the Tecno rotary actuator and slide. Virtually all the component parts are made of technopolymer to make the device lighter. The graph (see fig. 2.1.0) shows the clamping forces and strokes for parallel grippers.

Special:

On specific request we can supply other types of parallel grippers or optionals, such as:

- Extra-long stroke grippers deriving from series S11 paired precision slides: strokes up to 200 mm.
- Grippers with the body to one side with respect to the jaws.
- Grippers with a hood for use with cutting fluids.

GRIPPERS WITH TWO HINGED JAWS



• **Serie P6**

These are premium quality double-acting grippers with 30° opening angle, designed for application of a magnetic sensor. The pistons and fingers are made of specially ground hardened and tempered steel enabling them to operate over 10 million cycles. The direct arm opening mechanism, which is toggleless, allows high-speed operation. The seals are housed in the body and slide along the tempered steel piston rod without suffering wear. The materials used and the heat and chemical treatments applied means that the parts subject to stress are extra-resistant.

See the General Catalogue pages 1/65 - 1/67, for figures and drawing.



• **Serie P7**

This is a double-acting gripper with an excellent quality-to-price ratio. Designed for application of a retracting magnetic sensor. The body is in a single piece. Simplified jaw replacement method.



• **Serie P8**

Single-acting normally open grippers. Virtually all the component parts are made of technopolymer to make the device lighter. The smallest version is really tiny – it weighs a mere 36 g.

GRIPPERS WITH TWO RETRACTING JAWS



- **Serie P9**

These are double-acting grippers with 160° opening angle, designed for application of a magnetic sensor. The pistons and fingers are made of specially ground hardened and tempered steel enabling them to operate over 10 million cycles. The direct arm opening mechanism, which is toggleless, allows high-speed operation. The seals are housed in the body and slide along the tempered steel piston rod without suffering wear. The opening stroke can be adjusted by means of a screw. See the General Catalogue pages 1/65 - 1/67, for figures and drawing.



- **Serie P10**

Grippers with 20°-180° adjustable opening designing for gripping the part from the outside. The toggle system allows high clamping forces. There is also a version with springs for extra safety during pressure drops. Each of the two fingers can be adjusted by about 1°. Top quality materials and accurate working. Highly resistant hardened aluminium alloy body. Moving parts made of tempered steel. 2,000,000 cycles without maintenance. Induction sensors can be mounted.

GRIPPERS WITH THREE JAWS



- **Serie P11**

Grippers with a good quality-to-price ratio. Double action with internal or external clamping. Magnets for position sensors, slim type. Four-jaw self-centring version available on request.



- **Serie P12**

Highly-accurate sturdy grippers guaranteed for 1,500,000 cycles at maximum load without requiring maintenance. Top quality materials and accurate working. Highly resistant hardened aluminium alloy body. Moving parts made of tempered steel. Double action with internal or external clamping. Magnets for position sensors, except for size 50 which can mount induction magnets.

The following special versions are available on request:

- With induction sensors
- 5-position monitoring using a positionable sensor.
- With spring lock device for when there is no pressure.
- Double clamping force and half stroke.
- Sprung plate for positioning the part to clamp.